

# Deer Plot Seed

\*All prices subject to change\*



## MWZ Tine-N-Turkey



Ingredients:  
Enduro Elite alfalfa,  
Advantage ladino  
clover, Kopu II white  
clover, Berseem  
clover, Gallant red  
clover.

**\$ 25.75**

## MWZ Frozen Forage



Ingredients:  
Groundhog radish,  
purple top turnip,  
Dwarf Essex rape,  
Appin Turnip, Endure  
chicory

**\$ 17.25**

## MWZ Venison Veggies



Ingredients:  
Sunn hemp, Sugar  
beets, Purple top  
turnips, Frost master  
peas.

**\$ 17.25**

## Forage by the Pound

### Bearcat Red Clover



3 year clover; quick  
spring green-up,  
good recovery after  
heavy grazing.  
Great choice for  
low fertility soils.

**\$4.30/pound**

**\$205.00/50 pounds**

### Medium Red Clover



Short lived perennial  
forage legume.  
Great for green  
manure, plow down  
and cover crop.  
Frost seeds well.

**\$4.10/pound**

**\$185.00/50 pounds**

### Alsike Clover



Adapted to similar  
areas as red  
clover. Grows on  
wide range of soils.

**\$3.65/pound**

**\$15.75/ 5 pounds**

### Ladino White Clover



Great legume for  
pastures. Provides  
nitrogen and protein  
content to a pasture.  
Very large leaves.

**\$5.40/pound**

**\$230.00/50 pounds**

### Advantage Ladino Clover

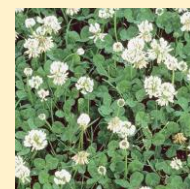


Great for pastures  
or wildlife plots.  
Remains in  
vegetative state  
during whitetail  
deer antler growth.

**\$5.00/pound**

**\$200.00/50 pounds**

### White Dutch Clover

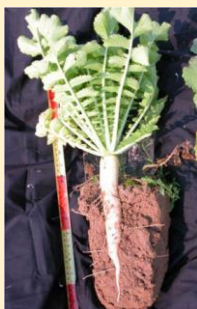


Works well as a  
forage. Small  
leaves, low growing.

**\$4.80/pound**

**\$220.00/50 pounds**

### Groundhog Radish



Radishes convert  
starches to sugars  
when cold  
temperatures occur,  
making them  
especially appealing  
during the late fall  
and winter.

**\$4.84 / 2 pounds**

### Purple Top Turnip



High bulb  
yielding turnip  
that grows with  
the "globe"  
exposed  
providing easy  
access to the  
entire plant.

**\$7.80 / 2 pounds**

### Oasis Chicory



Oasis chicory  
is a high  
quality, high  
yielding, broad-  
leaved  
perennial  
forage herb.

**\$14.00 / 2 pounds**

## Bulk Deer Feed

300 pound minimum. Packaged in bulk bags (60-70lb bags)  
Please give 24 hour notice. Call for pricing. 614-873-4621

# Deer Product Guide



\*All prices subject to change\*

## Whole Shelled Corn

- Whole Kernel Corn
- Feed free choice



**\$11.00** Bulk Pricing Available

## Apple Flavored Deer Corn

- Whole Kernel Corn
- Apple Flavoring
- Soy oil
- Feed Free Choice



**\$13.50** Bulk Pricing Available

## Autumn Harvest T99AH

A blend of whole re-cleaned shelled corn, whole re-cleaned roasted soybeans and a light coating of molasses. For use as a wildlife supplement, primarily during the months of September through March.



**\$22.00** 50 Pound Bag

## Apple Deer Block

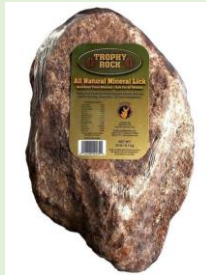
- Loaded with corn for supplemental energy.
- Apple flavored for maximum attraction



**\$9.50** 20 Pound Block

## Trophy Rock

Trophy Rock is an all natural attractant that provides deer 60+ trace minerals needed for optimum health.



**\$18.95** 20 Pound Rock

## OOZIE Deer Attractant

A sweet smelling, sweet tasting molasses attractant. Place above food plots and salt licks to ensure maximum attractant and consumption.



**\$19.75** 4 Pound Supplement

## Cherry Bomb / Apple Bomb

An effective long-range deer attractant. The enticing aroma pulls deer from afar. Highly palatable protein ingredients with added vitamins and minerals make it a great supplement.



**\$12.50** Cherry **\$13.99** Apple

## Lucky Buck Mineral

- Use Year-Round
- Develop Bigger, Better Racks
- Minerals Deer Love
- Ingredient For Portion Control



**\$19.40** 20 Pound Bucket

## White Salt Block

Economical and efficient feed for introducing salt as a nutrient into an animal's diet. Weather-resistant for free-choice feeding.



**\$8.10** 50 Pound Block

## Trace Mineral Block

Includes trace minerals that complement the diet to help promote digestion, growth, maintenance of body tissues, proper reproductive processes, and general animal well-being.



**\$9.20** 50 Pound Block